

DATASHEET

# Corrosion Coupon Rack

Corrosion Coupon Racks



## Corrosion Coupon Rack

Easy assembly

Variable flow control

Quick Connects for ease of coupon removal

Sturdy Wall Mount Designs

Built to ASTM Specifications

# Overview

Corrosion Coupon Racks are a reliable and inexpensive way to monitor the effectiveness of water treatment programs against the damaging effects of corrosion. The .75 inch models have 5 GPM (18.9 LPM) flow control and our 1 inch models offer 5 or 10GPM ( 18.9 or 87.8 LPM).

- 2 and 4 station racks with or without Flow Gauge
- 3/4 -1" Schedule 80 PVC rated 120PSI (8.27 bar) @ 125F
- Sample Port for testing or draining of racks
- Isolation valves inlet and Outlet
- Patent Pending "No Nut" coupon holders
- SCH 80 PVC Quick Connects with O-ring seal needs no tools to remove coupon holders.
- Heavy-Duty "Y Strainers"

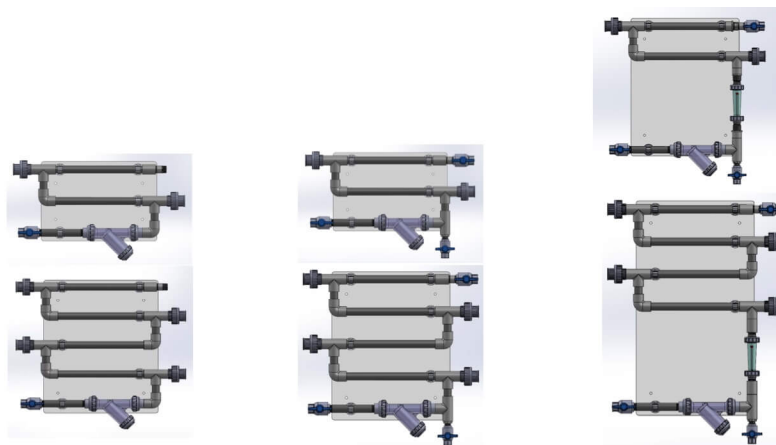


MODEL	PACKAGE	NUMBER OF COUPON HOLDERS	PIPE DIAMETER	FLOW CONTROL RATE	MATERIAL
<b>CRP-075-2T1-05</b>	Basic	2	3/4"	5 GPM	PVC
<b>CRP-075-4T1-05</b>	Basic	4	3/4"	5 GPM	PVC
<b>CRP-100-2T1-05</b>	Basic	2	1"	5 GPM	PVC
<b>CRP-100-4T1-05</b>	Basic	4	1"	5 GPM	PVC
<b>CRP-100-2T1-10</b>	Basic	2	1"	10 GPM	PVC
<b>CRP-100-4T1-10</b>	Basic	4	1"	10 GPM	PVC
<b>CRP-075-2T2-05</b>	Standard	2	3/4"	5 GPM	PVC
<b>CRP-075-4T2-05</b>	Standard	4	3/4"	5 GPM	PVC
<b>CRP-100-2T2-05</b>	Standard	2	1"	5 GPM	PVC

MODEL	PACKAGE	NUMBER OF COUPON HOLDERS	PIPE DIAMETER	FLOW CONTROL RATE	MATERIAL
<b>CRP-100-4T2-05</b>	Standard	4	1"	5 GPM	PVC
<b>CRP-100-2T2-10</b>	Standard	2	1"	10 GPM	PVC
<b>CRP-100-4T2-10</b>	Standard	4	1"	10 GPM	PVC
<b>CRP-075-2T3-05</b>	Premium	2	3/4"	5 GPM	PVC
<b>CRP-075-4T3-05</b>	Premium	4	3/4"	5 GPM	PVC
<b>CRP-100-2T3-05</b>	Premium	2	1"	5 GPM	PVC
<b>CRP-100-4T3-05</b>	Premium	4	1"	5 GPM	PVC
<b>CRP-100-2T3-10</b>	Premium	2	1"	10 GPM	PVC
<b>CRP-100-4T3-10</b>	Premium	4	1"	10 GPM	PVC

# Technical Diagram

## Coupon Rack Package Comparison



Packages

Basic

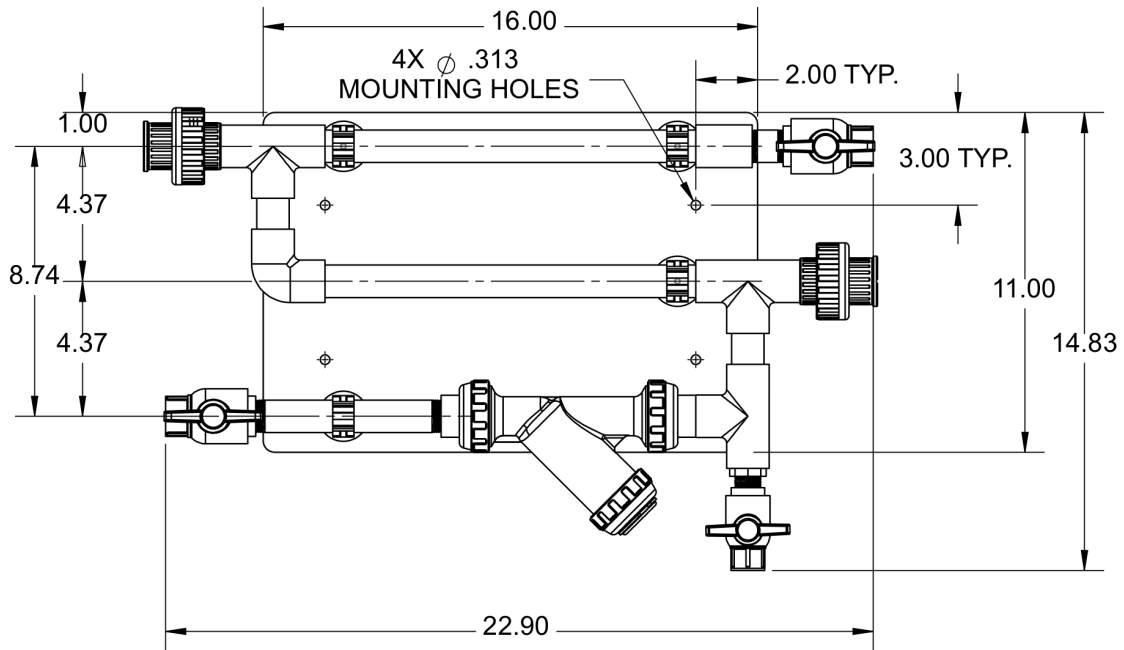
Standard

Premium

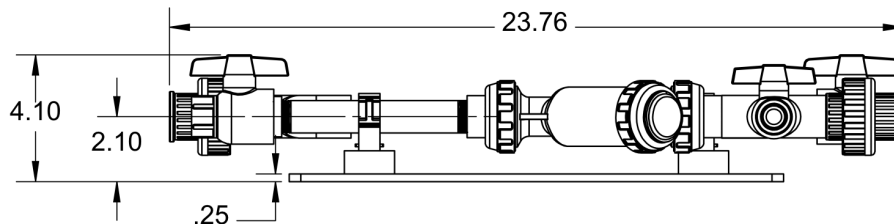
FEATURES			
Number of Coupon Holders	2 or 4	2 or 4	2 or 4
Flow Control	5 or 10 GPM	5 or 10 GPM	5 or 10 GPM
Quick-Release Coupon Holders	✓	✓	✓
Clear Y- Strainer	✓	✓	✓
VALVES			
Inlet Valve	✓	✓	✓
Outlet Valve	-	✓	✓
Drain Valve	-	✓	✓
FLOW INDICATION			
0-10 GPM Flow Meter	-	-	✓

# Technical Diagram

CRP-075-2T2-05



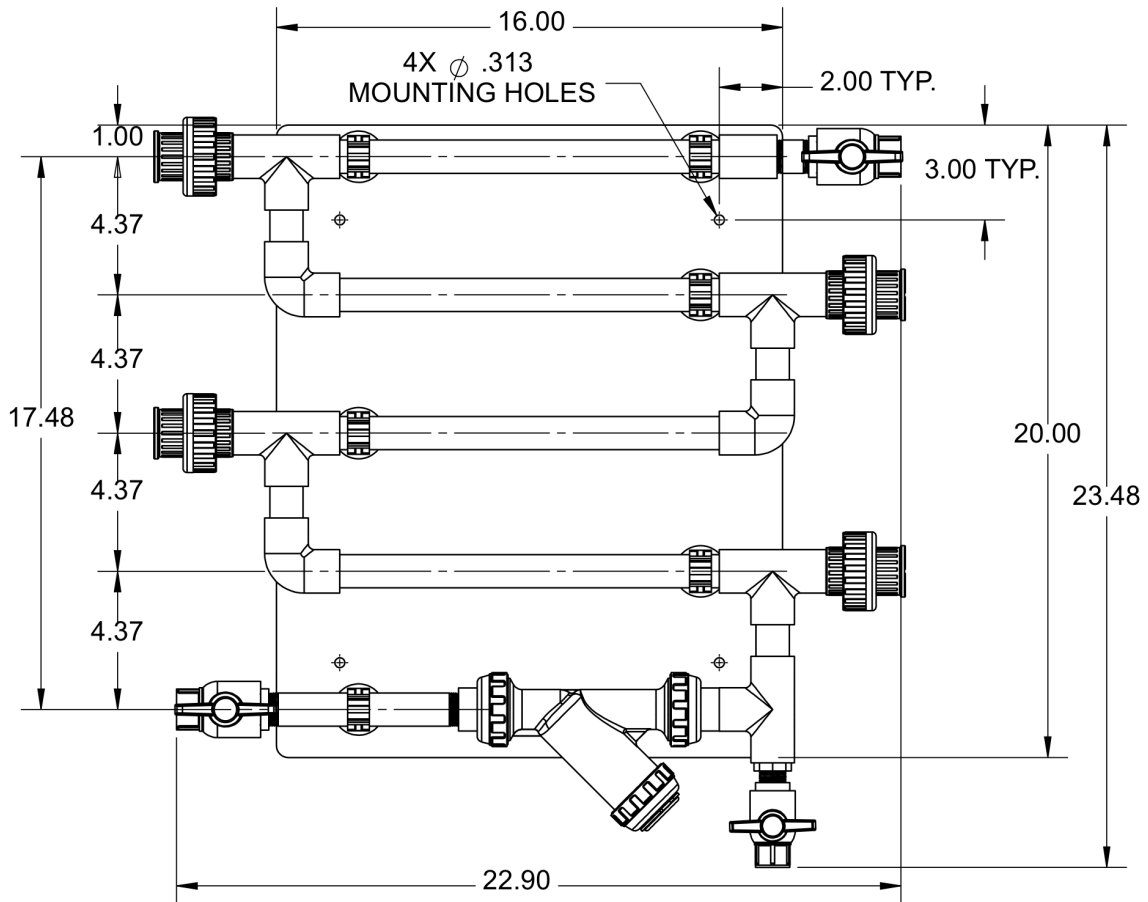
FRONT VIEW



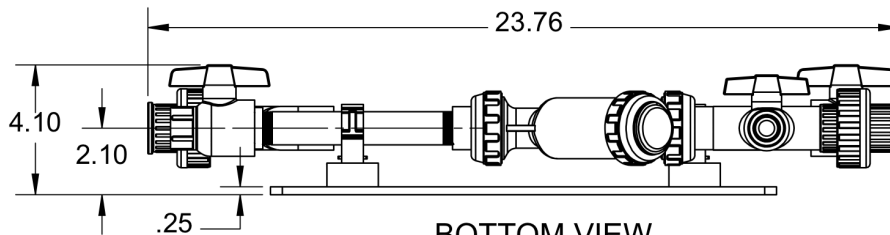
BOTTOM VIEW

# Technical Diagram

CRP-075-4T2-05



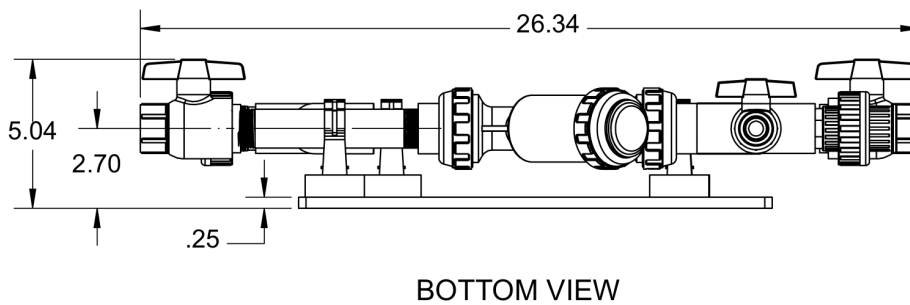
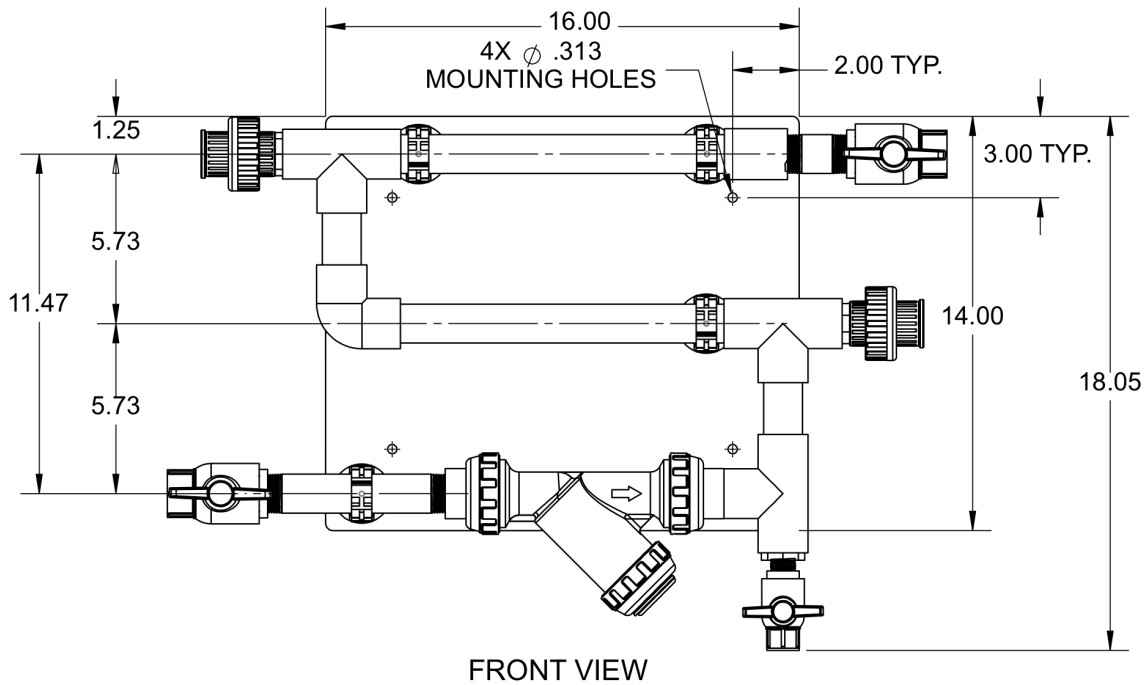
FRONT VIEW



BOTTOM VIEW

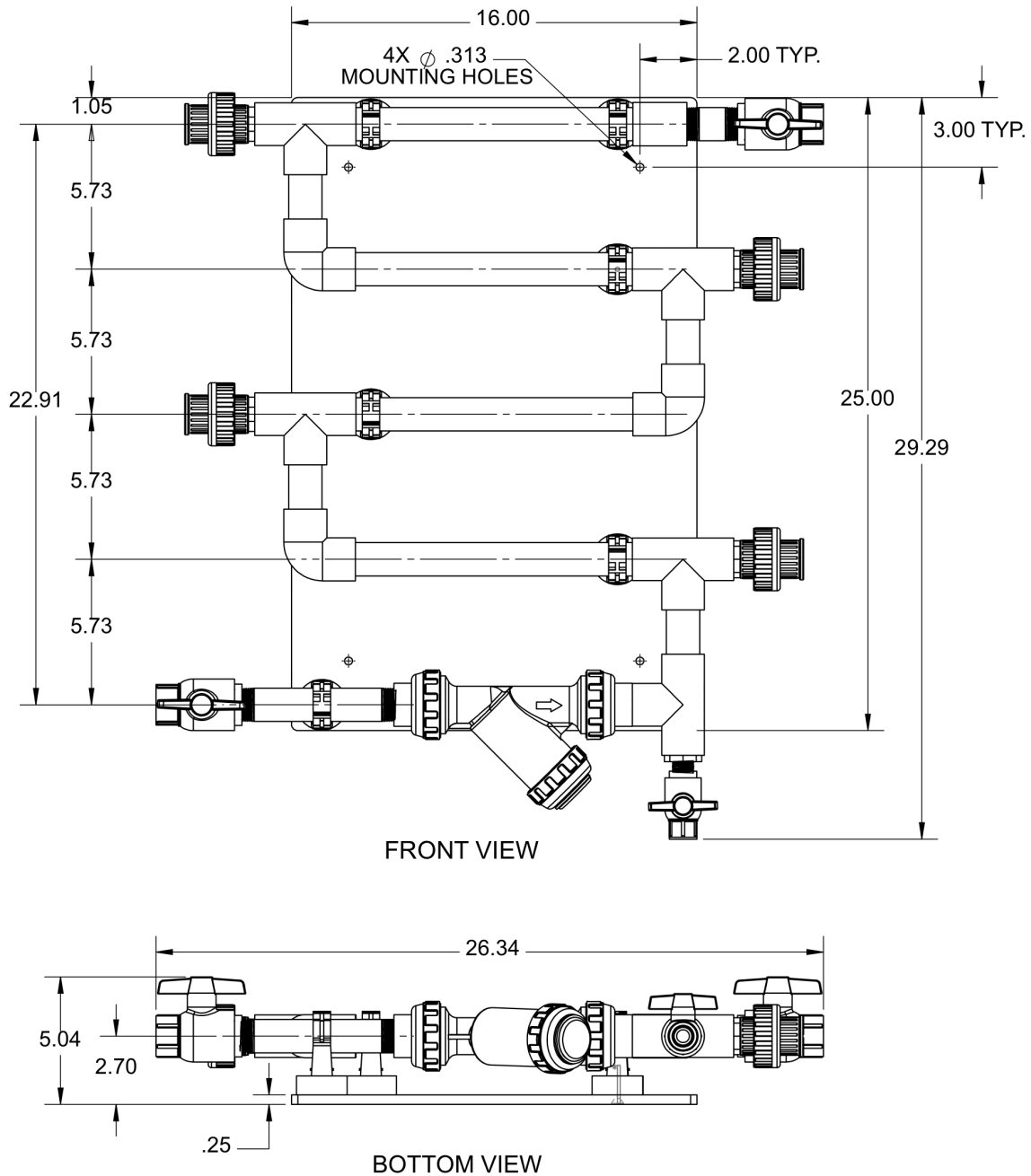
# Technical Diagram

CRP-100-2T2-05 & CRP-100-2T2-10



# Technical Diagram

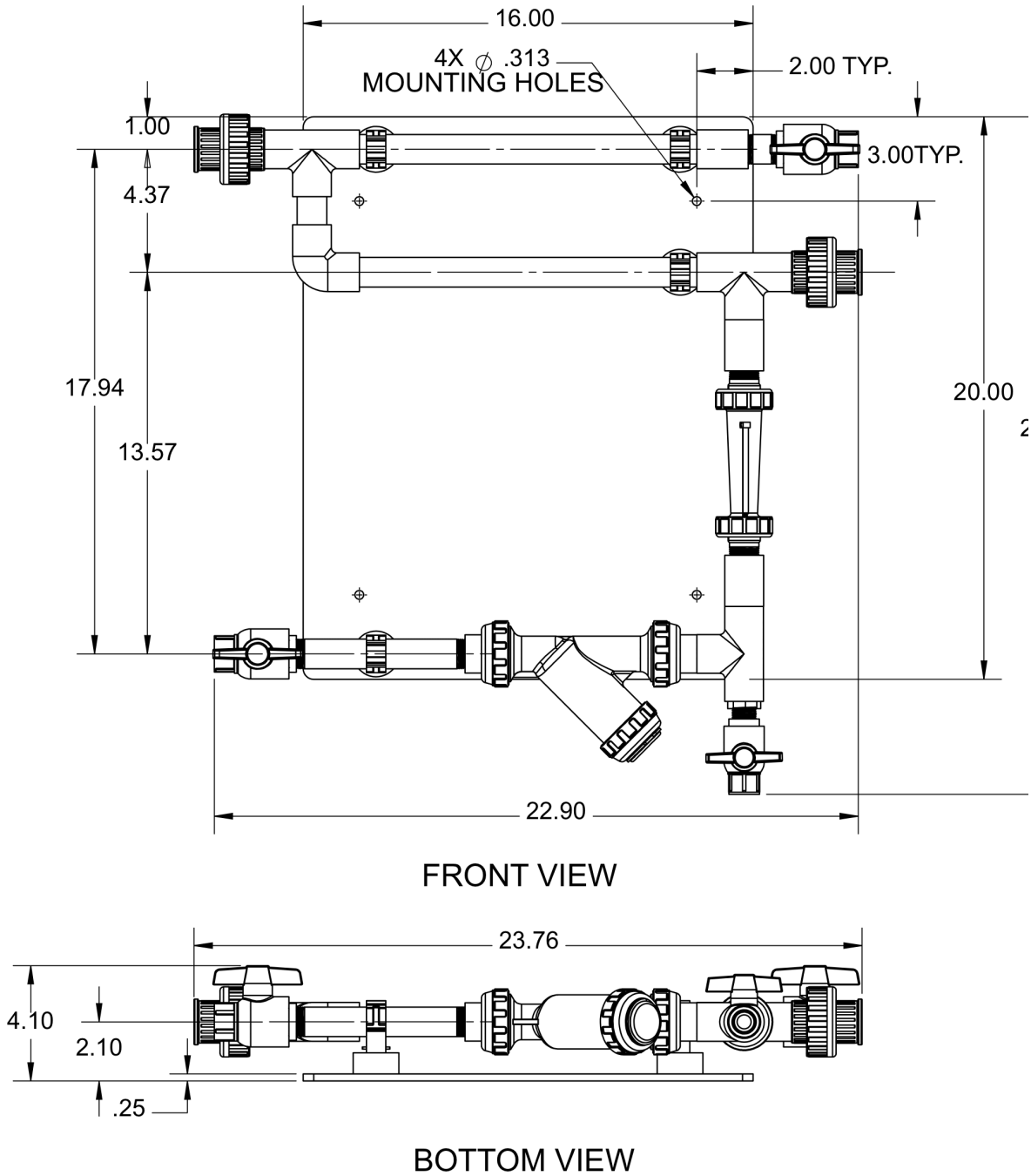
CRP-100-4T2-05 & CRP-100-4T2-10





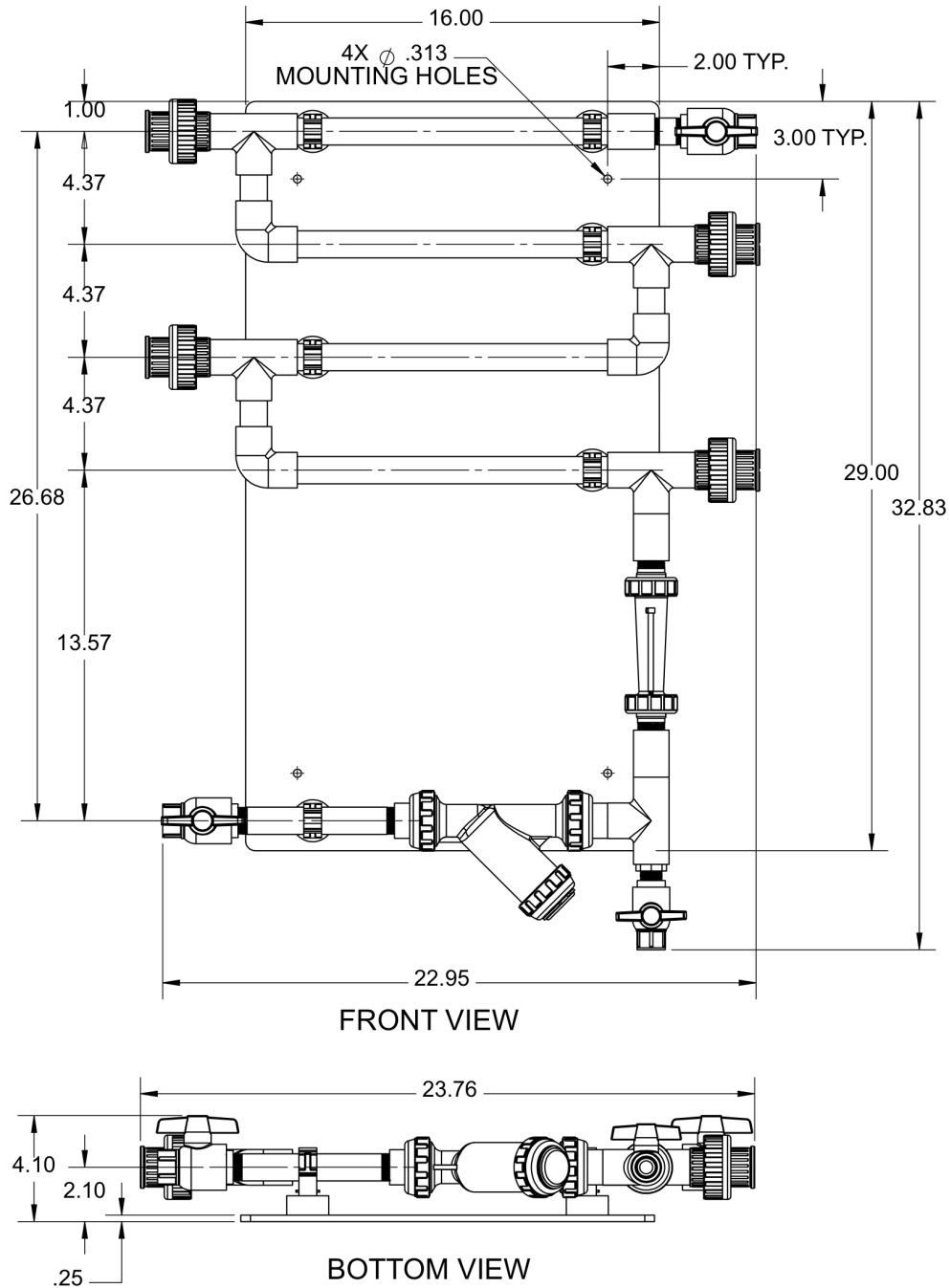
# Technical Diagram

CRP-075-2T3-05



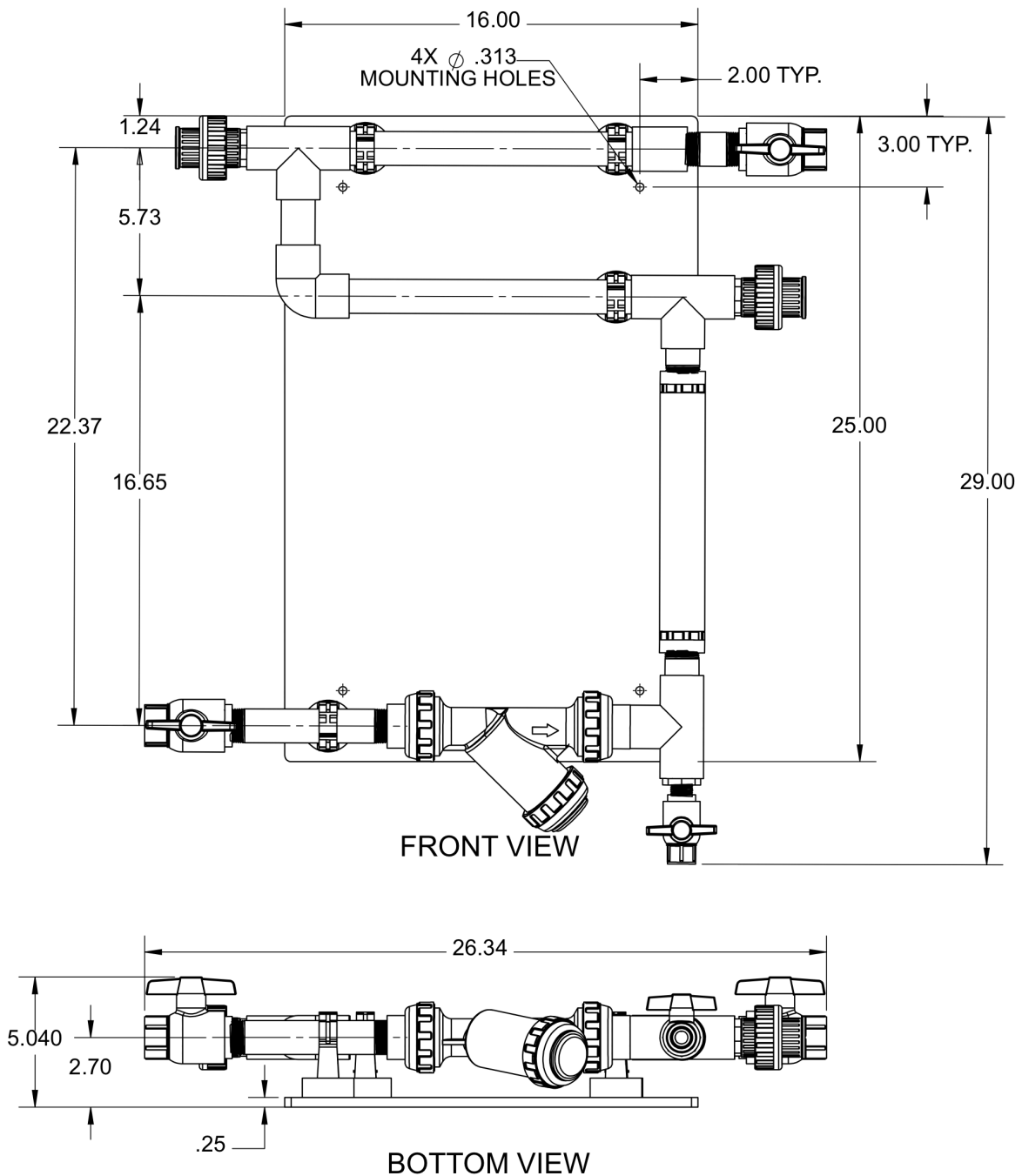
# Technical Diagram

CRP-075-4T3-05



# Technical Diagram

CRP-100-2T3-05 & CRP-100-2T3-10



# Technical Diagram

CRP-100-4T3-05 & CRP-100-4T3-10

